

# COSSD PRODUCT CATALOGUE

for



This product catalogue has been downloaded from **COSSD.com**. Listed products/services and their descriptions are shown as supplied by the title company—**COSSD** does not guarantee the accuracy or completeness of the information presented. Hosting of the PDF does not constitute an endorsement by **COSSD** of the products/services being offered.

6  
WAYS TO USE  
**COSSD.com**



SMARTPHONE / WEBSITE / DIGITAL EDITION / BOOK / iPad / GPS



# HEAVY HORSE

OILFIELD RENTALS

A Division of Mustang Controls Ltd.



## Horizontal Tank Rentals

Phone: 780-987-7300

After Hours: 780-991-7414

Info@heavyhorserentals.com



Horizontal Tank Rentals Oilfield Surface Equipment Rentals Alberta, British Columbia, Saskatchewan Canada



Horizontal Master Tank with Pump  
Manifold mounted on the porch



Dual Horizontal Tanks with  
Remote Pump Manifold



Horizontal Slave Tank c/w  
Mobile Phone Tank Level Readout

### Horizontal Tank Rentals

Heavy Horse Oilfield Rentals has Horizontal Tanks available for your tank farm requirements with the added capability of sending tank volumes directly to your mobile phone or computer. Get read outs anytime, anywhere.

**Master Tanks - 120 Cubic Meters, Double Compartment – each 60 Cubic Meters**

**Slave Tanks – 120 Cubic Meters, Single Compartment**

**Dual Horizontal Tanks with remote pump manifold**

Heavy Horse Oilfield Rentals is known for its quality. We do not cut corners. Only the best equipment is used. We are very proud of our products and the service we offer. In addition to leading edge equipment, we offer unparalleled service and support

**Service available 24/7 365 days a year**  
**Full maintenance packages**



Iphone Tank Level Read Out  
for Horizontal Tanks

[www.heavyhorserentals.com](http://www.heavyhorserentals.com)

Email: [info@heavyhorserentals.com](mailto:info@heavyhorserentals.com)

Phone: 780-987-7300



# HEAVY HORSE

OILFIELD RENTALS

A Division of Mustang Controls Ltd.



## Tank Farm Rentals

Phone: 780-987-7300

After Hours: 780-991-7414

Info@heavyhorserentals.com



Tank Farm Rentals - Oilfield Surface Equipment Rentals Alberta, British Columbia, Saskatchewan Canada



Stairs c/w berm alarm system  
and LED lighting



Manifolds c/w drip tray,  
roof, and LED lighting



Industry Leading Berm Alarm  
System with every system

### Tank Farm Rentals

Experienced Tank Farm Crew available 24/7 to assemble and disassemble your tank farm.

Horizontal tanks

400 bbl tanks

Hose Manifold c/w containment skid and roof

Pump Manifold c/w containment skid and roof, status run light

Stairs c/w LED overhead lighting and Berm Alarm

Hose Package

Fire Extinguishers

Heavy Horse Megaberm built extra strong and pins together for easy set up. Reduces labor costs

GEO mats and liners in stock.

**Service available 24/7 365 days a year**  
**Full maintenance packages**



**Heavy Horse Exclusive!!**  
**Industry Leading Berm Alarm System**  
**with every Containment Ring**



Pump Manifold c/w Pump Run Light

www.heavyhorserentals.com

Email: info@heavyhorserentals.com

Phone: 780-987-7300





# HEAVY HORSE

OILFIELD RENTALS

A Division of Mustang Controls Ltd.



## Premix Mud Tank Rentals

Phone: 780-987-7300

After Hours: 780-991-7414

Info@heavyhorserentals.com



Premix Mud Tank Rentals Oilfield Surface Equipment Rentals Alberta, British Columbia, Saskatchewan Canada



210 Cubic Metre Trip and Kill  
Mud System



Largest Tanks in the Industry  
125 Cubic Metres



Dual 60 Horsepower electric mix motors

### Premix Mud Tank Rentals

**104 Cubic Metres: Height 12'4" Width 10' Length 60'**

Compartment 1 – 52 cubic meters & Compartment 2 – 52 cubic meters

**54 Cubic Metres: Height 12'4 Width 9'4"**

Compartment 1 – 22 cubic metres and compartment 2 – 32 cubic metres

**125 Cubic Metres: Height: 12'6" Width 12'6" Length 60'**

Compartment 1 – 62.5 cubic meters Compartment 2 – 62.5 cubic metres

The 750 BBL (125 cubic meter) is the leading tank in the industry for large volume capacity saving the customer multiple tank rentals and trucking expenses.

### All our tanks are fitted as follows:

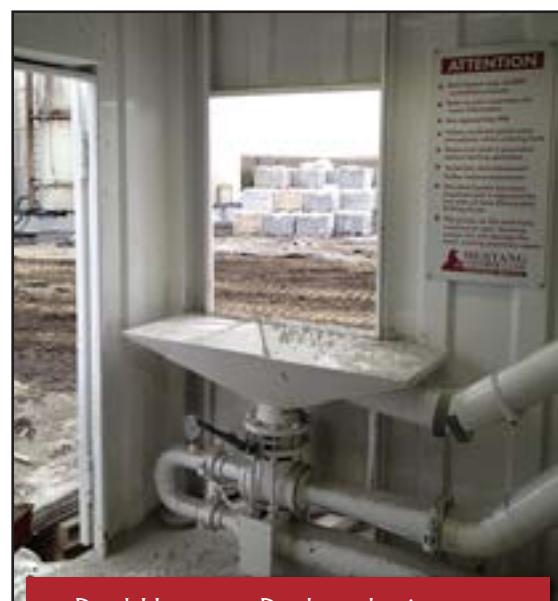
- Two vertical 60 hp electric mix motors, 100% pump backup built in - state of the art
- Four mud guns, four agitators
- Super bright deck and area lighting, stairs at each end
- Dual hoppers, one in mix room, one on the deck. Unbelievable mix capability on the hoppers
- 10 KW explosion proof electric heater in mix room
- Removable hand rails to allow tote bag access or bulk systems
- Space for two pallets in the mix room
- One exhaust fan built into the mix room hopper vented back to tank – zero dust
- One 100A 3W4P cord end 480V or 600V - only one supply cord required
- Suction traps in each compartment, vacuum truck cleanout through mud roll
- Piped for steam and water, deck steam and water manifold. Variable steam use
- Fire extinguisher, eyewash stations, man down collapsible extraction crane
- Field Changeable 600V or 480V
- Field Tested Field Proven Design, Roughneck Friendly



**Service available**

**24/7 365 days a year**

**Full maintenance packages**



Dual Hoppers: Deck and mix room

**www.heavyhorserentals.com**

**Email: info@heavyhorserentals.com**

**Phone: 780-987-7300**