

COSSD PRODUCT CATALOGUE

for



This product catalogue has been downloaded from **COSSD.com**. Listed products/services and their descriptions are shown as supplied by the title company—**COSSD** does not guarantee the accuracy or completeness of the information presented. Hosting of the PDF does not constitute an endorsement by **COSSD** of the products/services being offered.

6
WAYS TO USE
COSSD.com



SMARTPHONE / WEBSITE / DIGITAL EDITION / BOOK / iPad / GPS



About Us

Pinnacle Oil Tools Inc. is Western Canada's largest privately owned down-hole tool company with service centers operating in Red Deer, Drayton Valley and Grande Prairie with Sales and Technical support in Calgary, Alberta. Our innovative thinking, experience, quality equipment and flexible solution strategies have made Pinnacle Oil Tools a sought after downhole tool provider in not only Western Canada but also around the world.

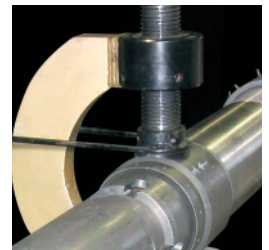
Both owners of Pinnacle Oil Tools have a hands on approach to management and are involved in all facets of its operations. Pinnacle Oil Tools has over 45 years of experience with Sales, Service, Design and Installation of downhole tools within it's core ownership and a minimum of 15 years experience in each of it's management positions. Our field personnel have anywhere from 10 to 20 years experience in downhole tool installations.

Pinnacle Oil Tools Owners and Management believe whole heartedly that the best designed and engineered equipment is only as good as the personnel that install it. For this reason all facets of management support the safety, training and development of all our personnel and maintain health, safety and quality certifications to support our effort and to improve upon all facets of our business.



ISO Certification

ISO
9001:2008
REGISTERED





Quality

Pinnacle Oil Tools Inc. recognizes that the disciplines of Quality Management are an integral part of its management function. The Owners, management and staff of Pinnacle Oil Tools Inc. view these as a primary responsibility and the adoption of appropriate Quality standards to be the key to good business. As such, our Quality Policy calls for continual improvement in its Quality Management activities.

We will conduct business according to the following principles:

- Comply with all applicable laws and regulations.
- Follow a concept of continuous improvement and make best use of our management resources in all Quality matters.
- Communicate our Quality objectives, and our performance against these objectives, throughout Pinnacle Oil Tools Inc. and to interested parties.
- Take due care to ensure that activities are safe for employees, associates and vendors and all others who come into contact with our work.
- Work closely with our customers and vendors to establish the highest Quality standards.
- Adopt a forward-looking view on future business decisions, which may have Quality impacts.
- Train our staff in the needs and responsibilities of Quality Management.

It is the aim of Pinnacle Oil Tools Inc. that, with the total involvement and understanding of all staff, and through the implementation of the documented ISO 9001:2008 Quality Management System, we will exceed the expectations of our customers.





Safety

Pinnacle Oil Tools Inc. is devoted to preventing accidental loss of our resources, including employees, physical assets and respective standing in our community.

Management will provide and maintain a safe and healthy work environment in accordance with industry standards, legislative requirements and will strive to eliminate any foreseeable hazard which may result in property damage, accidents or personal injury or illness.

Pinnacle Oil Tools Inc. is committed to protecting its employees as outlined in Alberta's Occupational Health and Safety Manual.

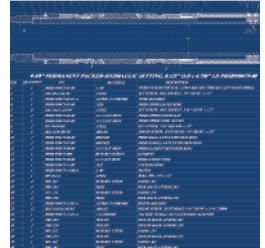
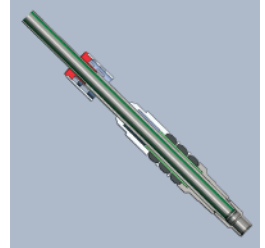
All employees, contractors and subcontractors will be equally responsible for minimizing accidents within our facilities. Safe work practices and procedures will be clearly defined in the Safety Manual for all employees to follow.

Pinnacle Oil Tools Inc. requires that all workers be involved in controlling accidental loss. This includes managers, employees, supervisors and contractors. Safety is everyone's responsibility.

All management functions will comply with legislative safety requirements as they relate to planning, operations and maintenance of facilities and equipment. All employees will perform their jobs properly in accordance with established procedures and safe work practices.

Pinnacle Oil Tools Inc. maintains high health and safety standards through regular audits and certifications through ISNetwork and ComplyWorks (formerly HSE Canada). We also maintain a COR certification through the Alberta Association for Safety Partnerships.

Pinnacle Oil Tools Inc. believes that safety is produced by commitment and dedication by all involved.





Flow Control

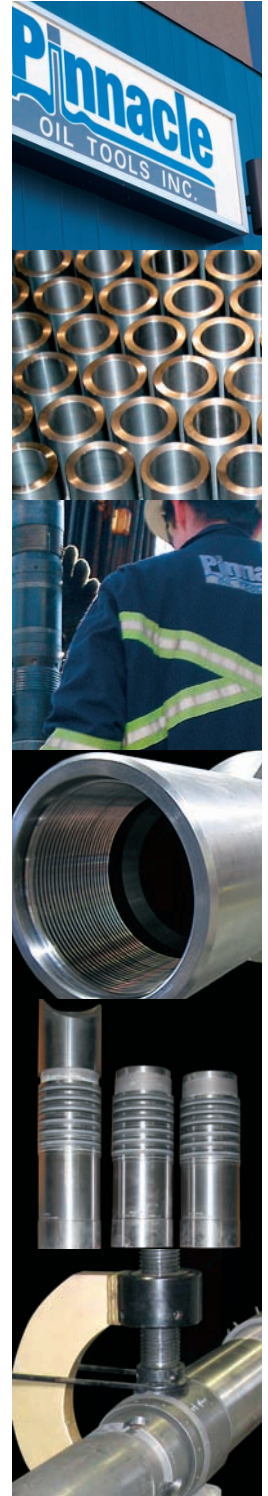
PF and PR Wireline Nipples	1
PX and PXN Wireline Nipples	3
PR and PRN Wireline Nipples	5
PL Sliding Sleeve	7
PFU Sliding Sleeve	9
PXA/PXO Sliding Sleeve	11
Wireline Re-entry Guide	12

Plugs and Retainers

HM-1B Hydraulic Mechanical Setting Tool	1
HM-1B Bridge Plug	1
HM-1 Hydraulic Mechanical Setting Tool	3
HM-1 Bridge Plug	3
HM-2 Bridge Plug	5
DB-5 Bridge Plug	7
DB-10 Bridge Plug	9
DBL Bridge Plug	11
PCR Cement Retainer	13
PCR J-Latch Stinger Seal Assembly	15
PCR Snap Latch Stinger Seal Assembly	16
PCR Mechanical Setting Tool (MST)	17
Magnum Mill-EZ™ Composite Bridge Plug	19
Pump-Off Bit Sub	21

Tubing Anchors

PC-1 Tubing Anchor Catcher	1
TML Tubing Anchor Catcher	3
HC-1 Hydraulic Set Tubing Anchor	5
Dual String Anchor	7
Clutch Type Tubing Swivel	9
Tubing Drain	10
Reverse Tubing Drain	11





Liner Hanger Products and Casing Patches

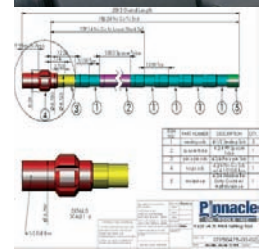
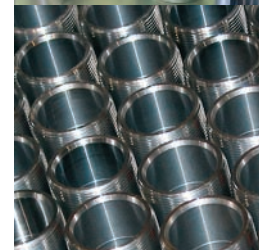
PFB Casing Packer	1
PLH Liner Hanger Packer	3
PGV-6 Gas Vent Casing Patch System	5
PRCP Retrievable Casing Patch	7
Cup Type Gas-Vent Casing Patch	9

Open Hole Products

Alpha Pak Anchor Seal Assembly	1
Alpha Pak Liner Hanger Packer	2
Alpha Pak Hydraulic Setting Tool	3
Crest Pak Anchor Seal Assembly	4
Crest Pak Hydraulic Set Liner Hanger Packer	5
Tri Lug Anchor Seal Assembly	6
Pinn Pak Hydraulic Set Open Hole Packer	7
Pinn Pak II Hydraulic Set Open Hole Packer	8
Pinn Port Communication Sleeve	9
Anchor Pak Hydraulic Set Open Hole Anchor Packer	10
Hydra Port Communication Sleeve	11
Omega Activation Sub	12

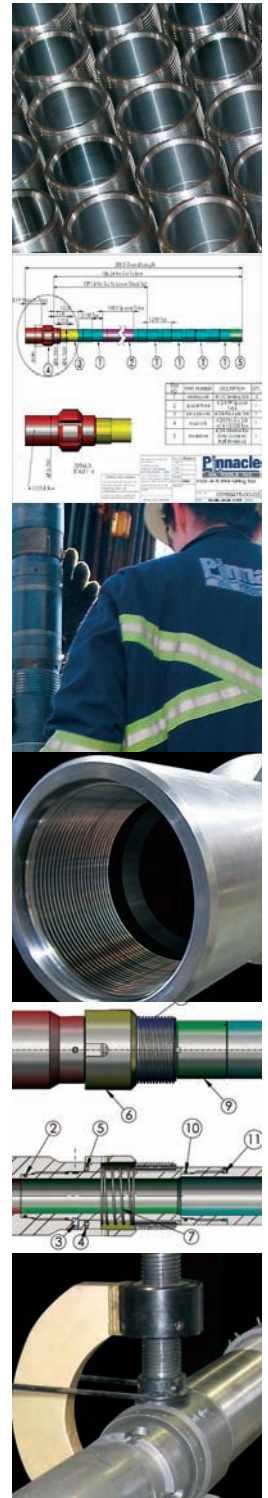
Fishing Tools & Mud Motors

Coil Tubing Dimple Connector	1
Roll-On to Thread Connector	2
External Slip Type Dimple Coil Tubing Connector	3
Dual Flapper Check Valve	4
Float Valve	5
Hydraulic Disconnect	6
Circulating Sub	7
Motor Head Assembly	8
Boot Basket	9
Venturi Jet Junk Basket	10
Ultra Hydraulic Coil Tubing Jar	11
Coil Tubing Intensifier	12
Agitator/Extended Reach Tool	13
G-Force Driver	14
Drilling Motors	15
Carbide Mills	16
Rotating Wash Tool	17



Service Tools

Casing Scraper	1
Tubing Swivel	3
RBV Tubing Test Valve	4
P1-J Valve and Retrieving Tool	5
Model A Tubing Dump Bailer	6
CWR Retrievable Bridge Plug	7
MBV By-Pass Valve	9
PC Unloader	10
P-104 Tension Squeeze Packer	11
PA Fluid Control Valve	13
PD Fluid Control Valve	14
P-3 Compression Set Retrievable Packer	15
SST Selective Stimulation Assembly	17
Drag Block Assembly	19
MCCL Mechanical Collar Locator	19
SST Example Tool String	21
SST Selective Treating Assembly Example Running Procedure	22
PTC Retrievable Bridge Plug	23
PHD Compression Set Squeeze Packer	25
HDSP Retrievable Storm Packer	27
PSV Storm Valve	29
PSP Sand Pump (Pump to Surface)	30
Common PSP Pump to Surface Configuration	31
PSB Sand Bailer	32
Common PSB Sand Bailer Configuration	33
BDA Hydraulic Setting Tool	34
HST 350 and 425 Hydraulic Setting Tools	35
HDST Hydraulic Setting Tool	37
SBAK Seal Bore Packer Adapter Kit	39
Model PJ Straddle Packer Assembly	41

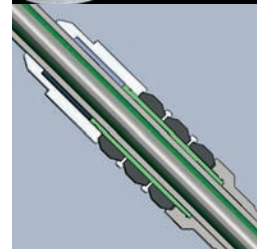


Retrievable Packers

PCP Cup Packer	1
PA-III Single Grip Tension Packer	3
CA-III Single Grip Compression Packer	5
TTP Tandem Tension Packer	7
CIP Compression Isolation Packer	7
PFB Casing Packer	9
PX-6 Mechanical Set, Double Grip Packer	11
PX-6W Wireline Set, Double Grip Packer	13
PX-8 Mechanical Set, Double Grip Packer	15
PX-8W Wireline Set, Double Grip Packer	17
PX-10 Mechanical Set, Double Grip Packer	19
PX-10W Wireline Set, Double Grip Packer	19
P-3 Single Grip, Compression Set Packer	21
PS-1 Snap-Set Compression Packer	23
PS-2 Snap Set Compression Packer	25
HCT Hydraulic Coil Tubing Packer	27
AT Thermal Packer	29

Hydraulic Retrievable Packers

HIP Hydraulic Isolation Packer	1
PH-6 Hydraulic-Set Production Packer	3
PHG Hydraulic-Set Production Packer	5
Hydro Trip Sub	8
PHG-II Hydraulic-Set, Dual-String Production Packer	9
SBRP-1 Retrievable Sealbore Packer	11
SBRP-2 Retrievable Sealbore Packer	11
Pump Out Plugs	13



Seal Bore Packers

PS Permanent Packer	1
PL Permanent Packer	3
PLB Permanent Packer	5
PHSB Hydraulic Permanent Packer	7
PHLB Hydraulic Permanent Packer	7
SBRP-1 Retrievable Sealbore Packer	9
SBRP-2 Retrievable Sealbore Packer	9
PBR Polished Seal Bore Receptacle	11
Seal Assembly Components	13
Seal Assembly Metallurgy	13
Seal Configurations and Materials	14
Seal Assembly Modular Components	15
Common Seal Bore Packer Component Configurations	16
Mill-Out Sub	17
Seal Bore Extension	17
Adapters and Couplings	17

Accessories

PL-8K and PL-10K On-Off Assemblies	1
Blast Joints/Flow Couplings	3
Perforated Production Tubes	4
WLAK Packer Wireline Adapter Kit	5
Pump-Out Plugs	6
Hydro Trip Sub	7
Chemical Injection Nipple	8
PC Expansion Joint	9
PE Expansion Joint	9
PTT Torque Thru Shear-Out Safety Joint	10
PRS Rotational Safety Joint	11
Downhole Tubing Swivel	12
Tubing Drain	13
Reverse Tubing Drain	14

