

# COSSD PRODUCT CATALOGUE

for



This product catalogue has been downloaded from **COSSD.com**. Listed products/services and their descriptions are shown as supplied by the title company—**COSSD** does not guarantee the accuracy or completeness of the information presented. Hosting of the PDF does not constitute an endorsement by **COSSD** of the products/services being offered.

6  
WAYS TO USE  
COSSD.com





305, 5208-53 Avenue Red Deer,  
Alberta Canada



## Equipment Catalog



- COR Certified
- Complyworks and ISN Compliant
- Cost- effective Remote housing and Food Service Solution





## Table of Contents

Introduction	1
Equipment List	2
Equipment List	3
Unit 2 Diagram	4
Unit 3 Diagram	5
Unit 5 Diagram	6
Unit 7 Diagram	7
Unit 8 Diagram	8
Unit 9 Diagram	9
Unit 10 Diagram	10
Unit 11 Diagram	11
6 Man Wet Sleeper	12
8 Man Wet Sleeper	13
4 Man VIP Quarters	14
Pictures - Recreation Trailer	15
Pictures - Generators	16
Pictures - Kitchen	17
Pictures	18





## **Introduction**

For the past 40 years Roll'n & Big Sky Camp Catering have been providing camps and catering for remote locations for industrial work sites across Canada, Alaska and for a period of time, in Africa.

In Alaska we have built and operated five custom two story side by side camps mounted on tundra trailers. These camps have their own water and sewage storage holding tanks built into the trailer. All that is required to move across the tundra is a truck.

In Canada we have eight unique, cutting edge camp configurations. The camps are modern and are all electric. We have moved away from propane use in order to eliminate a variety of hazards. This decision also reduces the environmental impact because it utilizes one fuel cell.

Our new camp units are 14' wide and 65' long in order to facilitate private single occupancy for our clients.

All our camps are custom built. During construction we stretched several of the camps to add extra amenities such as an extra bathroom and an extra dining room table. The camps have two hot water tanks and two water pumps, (these are backups in case of primary unit failure). All of our camps come with two 300kw generators complete with fuel storage. Camp options include: water storage units, sleepers and fitness/recreation units.

We can provide any type of custom camp configuration to service specific needs, from small 4-man camps to accommodation for 200 people. We are solution driven and provide options for specific client needs on projects that are too short for a dorm style camp. Through consultation with you, we will present convenient package options that will meet your needs and save you money. Our set-up is quick and therefore a cost effective choice for any client.

We have a dedicated camp general manager who oversees our field superintendents to ensure the effective management of our staff, our equipment and our services.

Big Sky has built a reputation in the industry as a leader in catering by providing high quality hearty meals with fresh fruit and vegetables and meals made from scratch.

Big Sky is a member of ISN, Comply Works and maintains a COR certification in good standing, as the safety of our staff and clients is our number 1 priority. Our daily operations and hazard assessments, safety meetings and continued training of our staff have helped us develop a strong safety culture. The focus of which is to prevent injuries and incidents. We have kept our camp and catering division manageable in order to provide the highest quality of service to you, our customer.





## Equipment List

### **Roll'n Unit #2**

6 Unit Side By Side (All Electric Units)

Features: Double Rooms, Private Showers, Sleeps 27, All Electric Appliances, 2 Stackable Washers & Dryers, 1680 Gal Water Storage Tanks.

### **Roll'n Unit #3**

5 Unit Side By Side (All Electric Units)

Features: Double Rooms, Private Showers, Sleeps 19, All Electric Appliances, Walk In Cooler & Freezer, 2 Washers & Dryers, 1500 Gal Water Storage Tanks.

### **Roll'n Unit #5**

6 Unit Side By Side (All Electric Units)

Features: Double Rooms, Private Showers, Sleeps 27, All Electric Appliances, 1 Stackable Washer & Dryer, 1680 Gal Water Storage Tanks.

### **Roll'n Unit #7**

6 Unit Side By Side (All Electric Units)

Features: Sleeps 27, All Electric Appliances, Double Rooms, Private Showers, 2 Stackable Washers & Dryers, Walk In Cooler & Freezer, 1500 Gal Water Storage Tanks.

### **Roll'n Unit #8**

6 Unit Side By Side (All Electric Units)

Features: Sleeps 27, All Electric Appliances, Double Rooms, Private Showers, 2 Stackable Washers & Dryers, Walk In Cooler & Freezer, 1500 Gal Water Storage Tanks.

### **Roll'n Unit #9**

7 Unit Side By Side (All Electric Units)

Features: Brand New In 2013, Sleeps 31 All Single Rooms, Theater Room, Double Dining Room, All Electric Appliances, Private Showers, 2 Washers & Dryers, Walk In Cooler 1500 Gal Water Storage Tanks

### **Roll'n Unit #10**

6 Unit Side By Side (All Electric Units)

Features: Brand New In 2013, Sleeps 27 All Single Rooms, Theater Room, All Electric Appliances, Private Showers, 2 Washers & Dryers, Walk In Cooler & Freezer, 1500 Gal Water Storage Tanks.

### **Roll'n Unit #11**

7 Unit Side By Side (All Electric Units)

Features: Brand New In 2014, Sleeps 31 All Single Rooms, Theater Room, Double Dining Room, All Electric Appliances, Private Showers, 2 Washers & Dryers, Walk In Cooler 1500 Gal Water Storage Tanks



### **6 Man Wet Sleepers** (Electric)

Features: 2014 built, 6 Single Rooms, With 2 Full Bathrooms, Washer and Dryer, Stand Alone Water System With 800 Gal Water Storage, All Wired To Plug Into Fire Alarm Systems On Our Camps.

### **8 Man Wet Sleepers** (Electric)

Features: 4 Double Rooms, With 2 Full Bathrooms, Washer and Dryer, Stand Alone Water System With 800 Gal Water Storage, All Wired To Plug Into Fire Alarm Systems On Our Camps.

### **Recreation Trailers** (Electric)

Features: Full Service Gym Complete With Weight Lifting Cage, Bench, Free Weights, Treadmill, Elliptical, Recumbent Bike, Lounge Area With TV & Satellite.

### **4 Man VIP Sleeping Quarters** (Electric)

Features: 4 Single Bedrooms Complete With Own Bathrooms, Refrigerator, Coffee Pot, Microwave, Desk With Office Chair & Filing Cabinet, Television, DVD Player, Washer & Dryer and Stand Alone 800 Gal Water Storage System.

### **3000 Gal Water Storage** (Electric)

Features: 2-1500 Gal Water Tanks, 2-Electric Heat, 2 Pumps, Hoses Included.

### **300KW Generators**

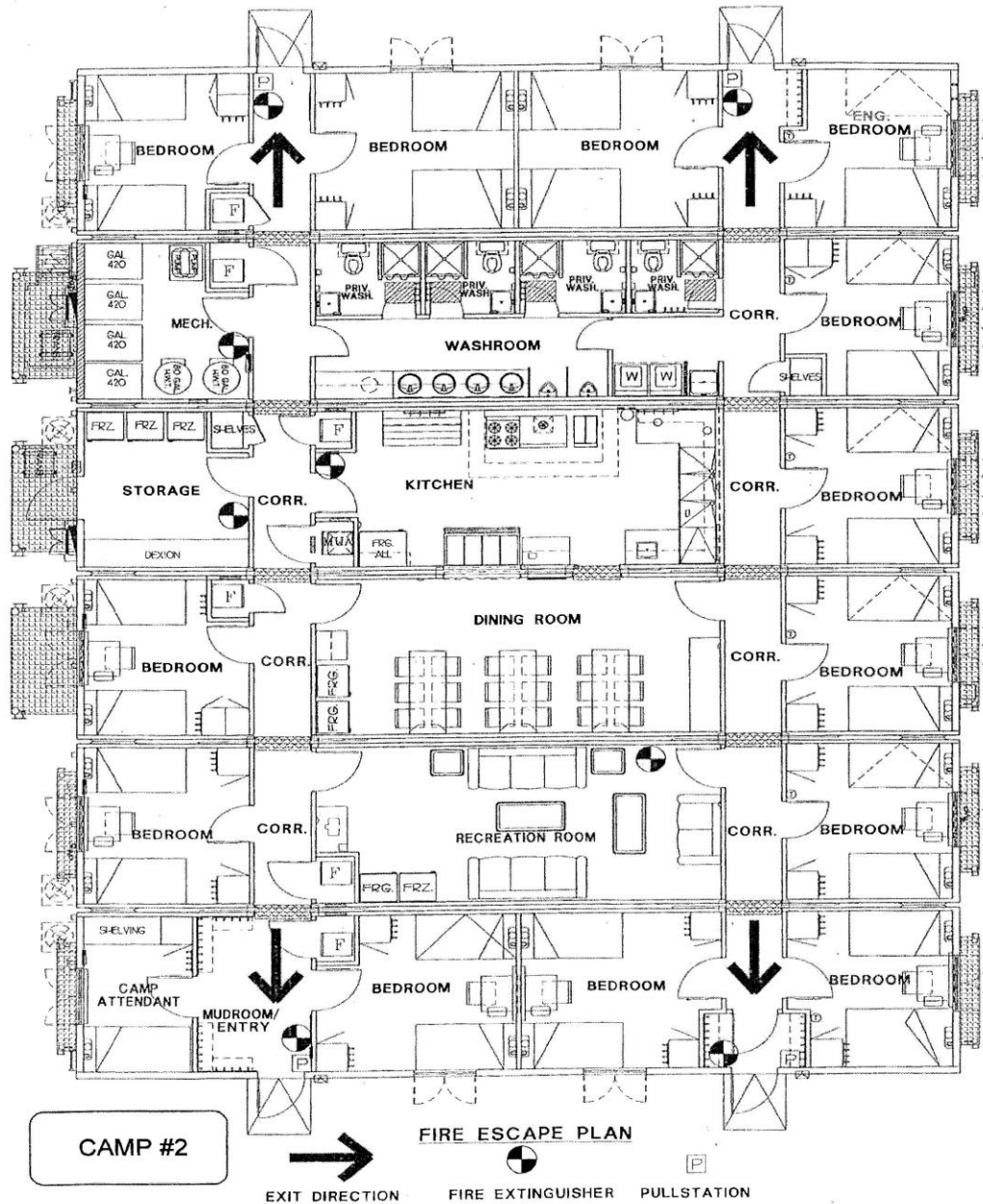
Features: 2- 300 Kw Generators, 1-Main Generators, 1-300 Kw Back Up Generator, All Camps Come With Generators, Built In Fuel Storage Tanks. (Sizes Varies from unit to unit)



Left: A 118 man camp complete with 2 dorms and a 5 unit electric kitchen and all support structures.

Below: This Two Storey camp is built on a platform which makes it easier to move using only one truck and is mainly used in Alaska.

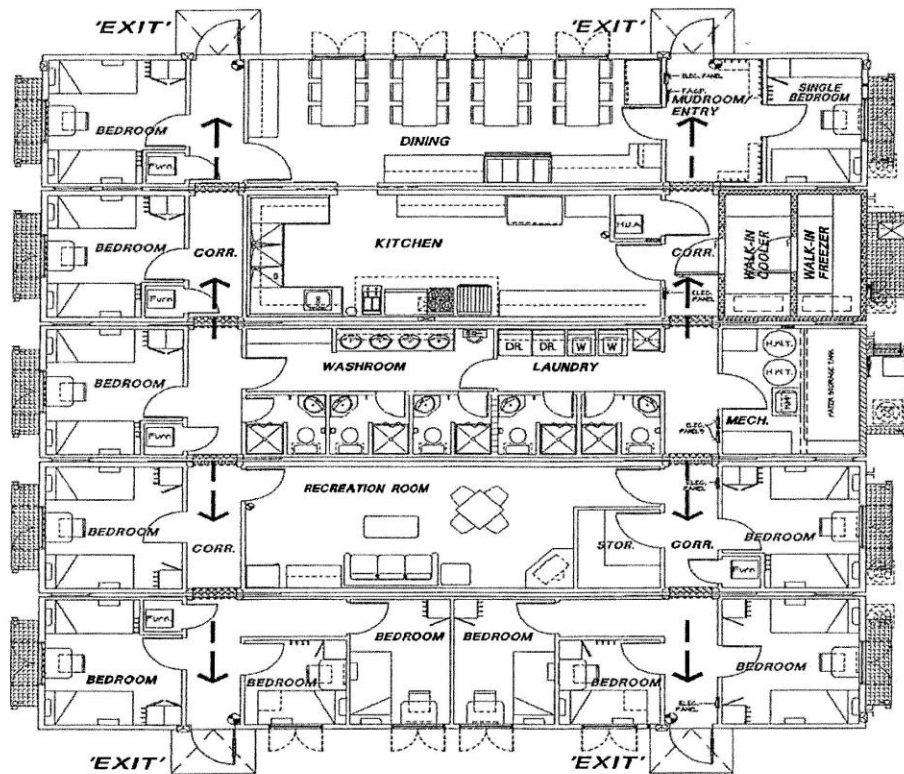




## Roll'n Oilfield Industries Unit 2



## EMERGENCY EXIT PLAN



**LEGEND:-**

← — EXIT ROUTE  
● PORTABLE FIRE EXTINGUISHER

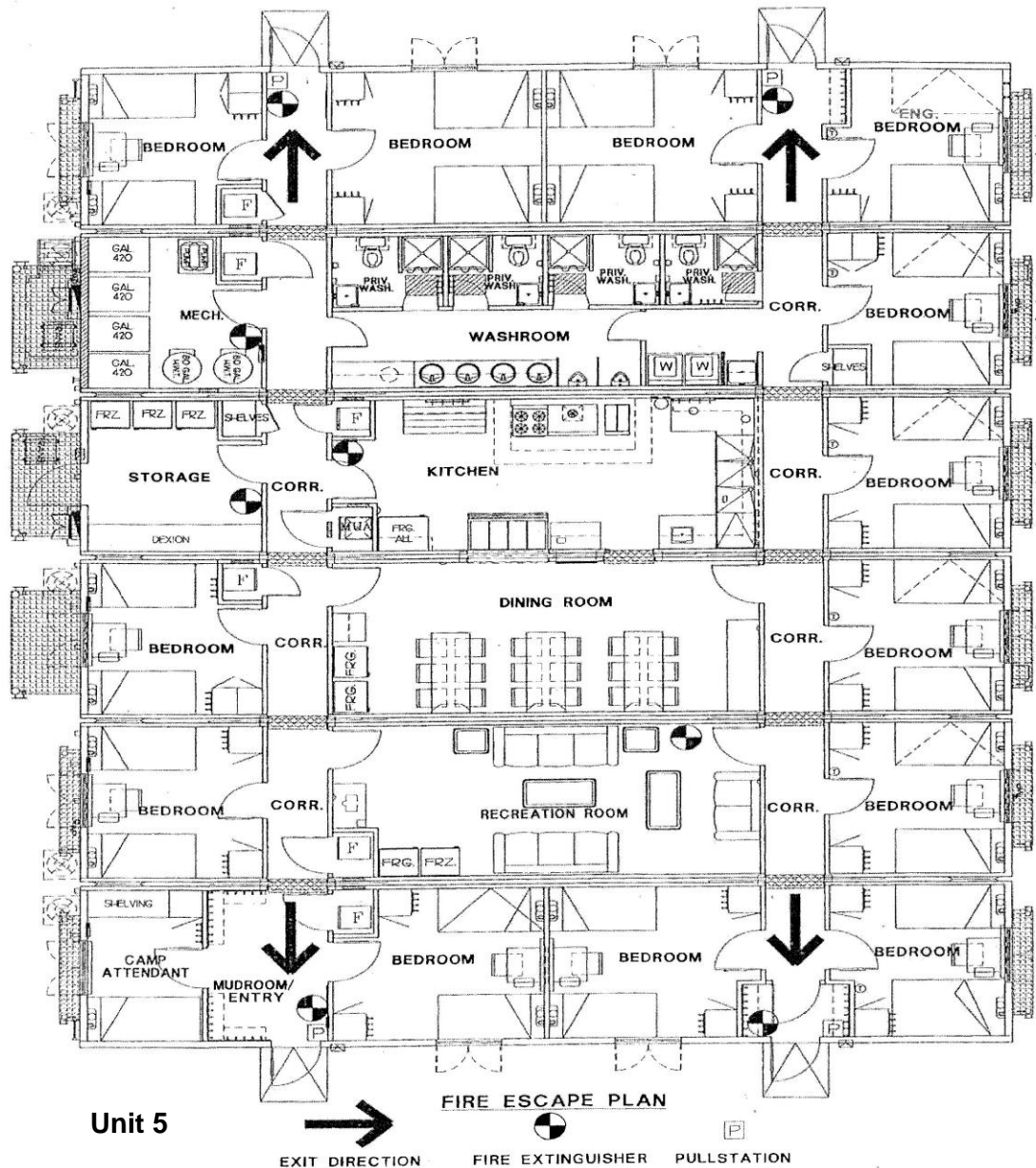
FIRST AID KIT  
EYE WASH STATIONS

project	CAMP #3	by	VIC	JOB NO.	2777
		scale	3/32"=1'-0"	date	16-01-2007
drawing				sheet number	F-545B

ROLL'N OILFIELD INDUSTRIES LTD.  
FIVE UNIT SIDE BY SIDE COMPLEX  
COMPLEX FLOOR PLAN

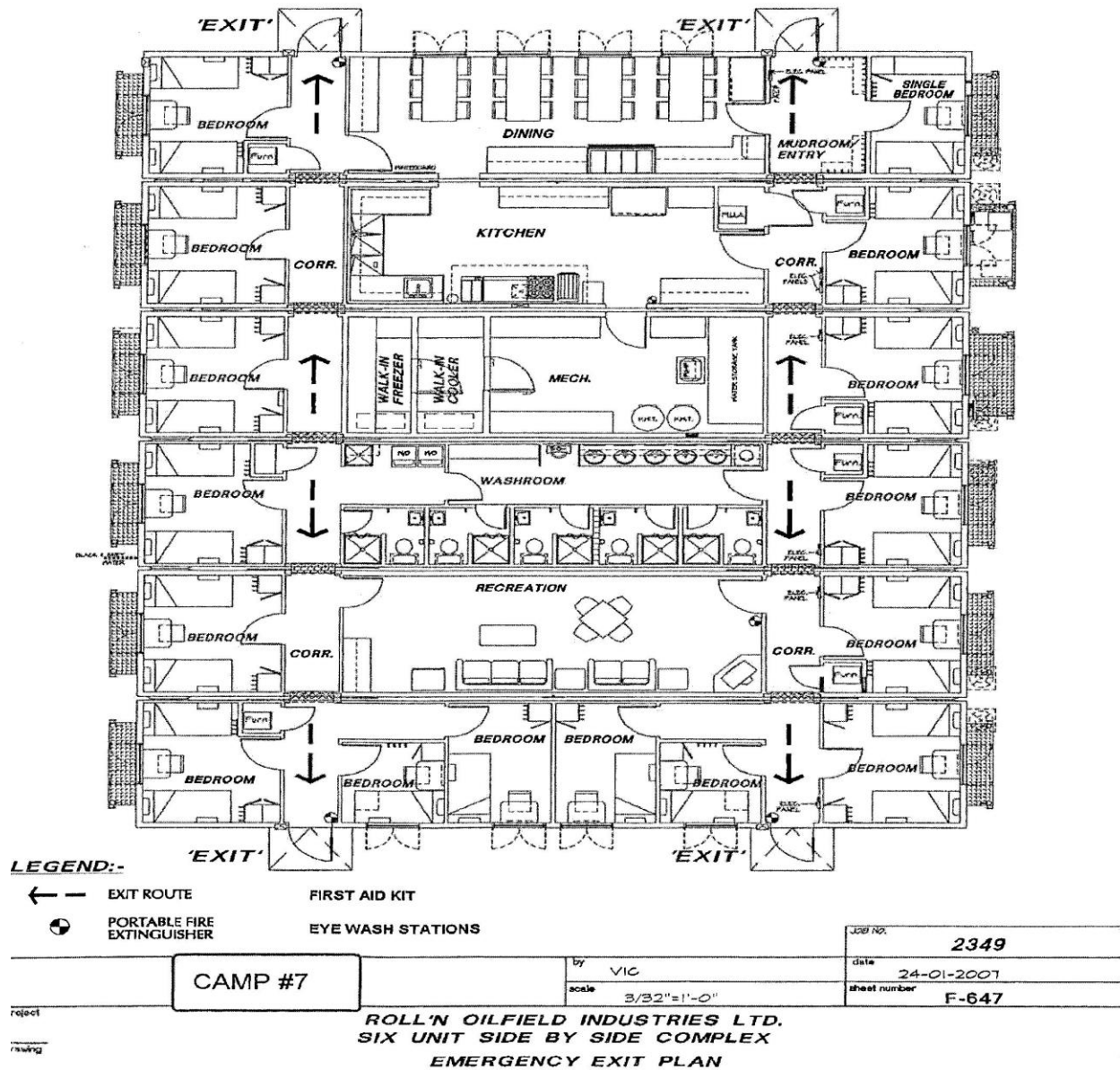
**Roll'n Oilfield Industries Unit 3**





**Roll'n Oilfield Industries Unit 5**

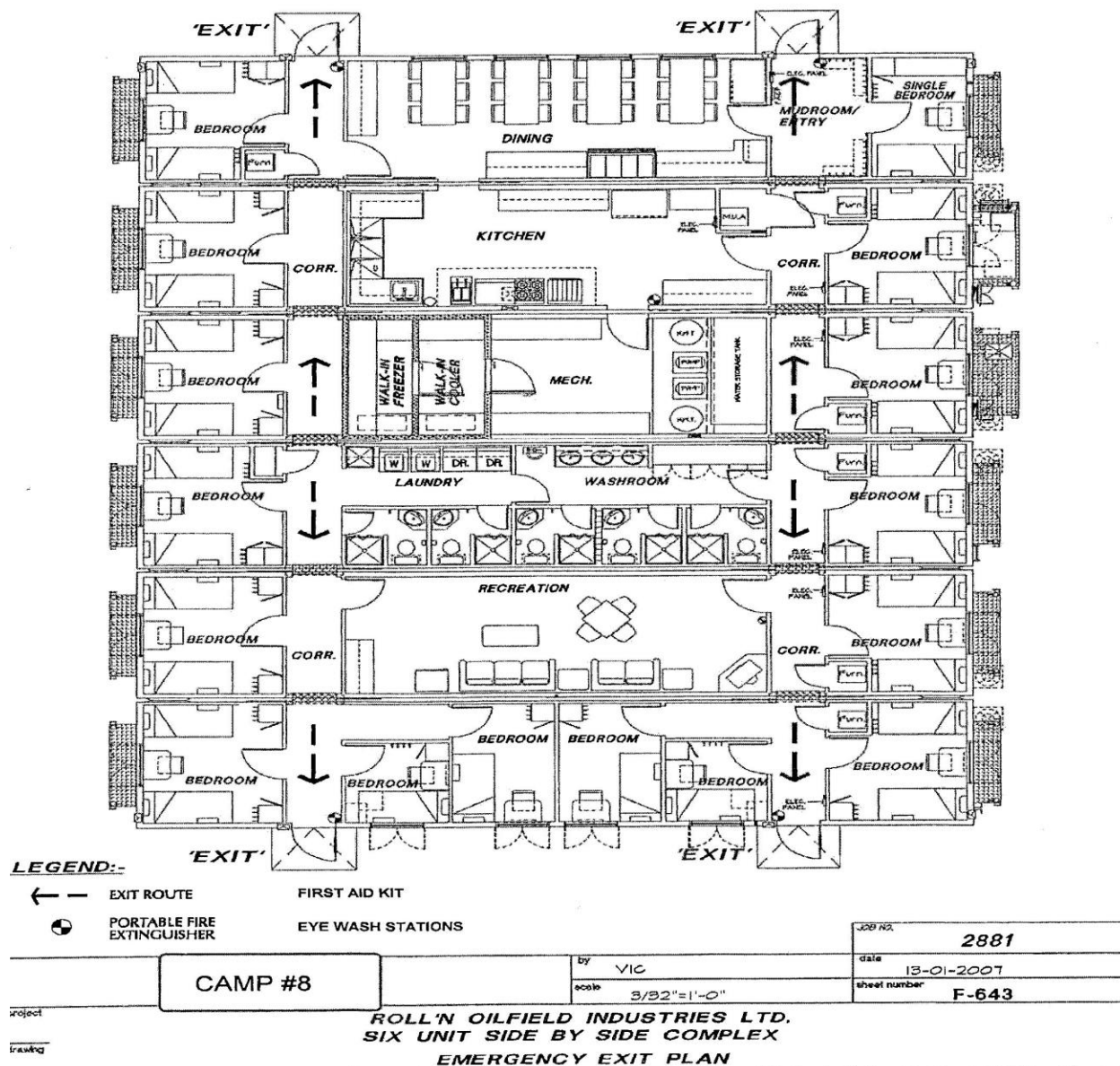
# EMERGENCY EXIT PLAN



**Roll'n Oilfield Industries Unit 7**

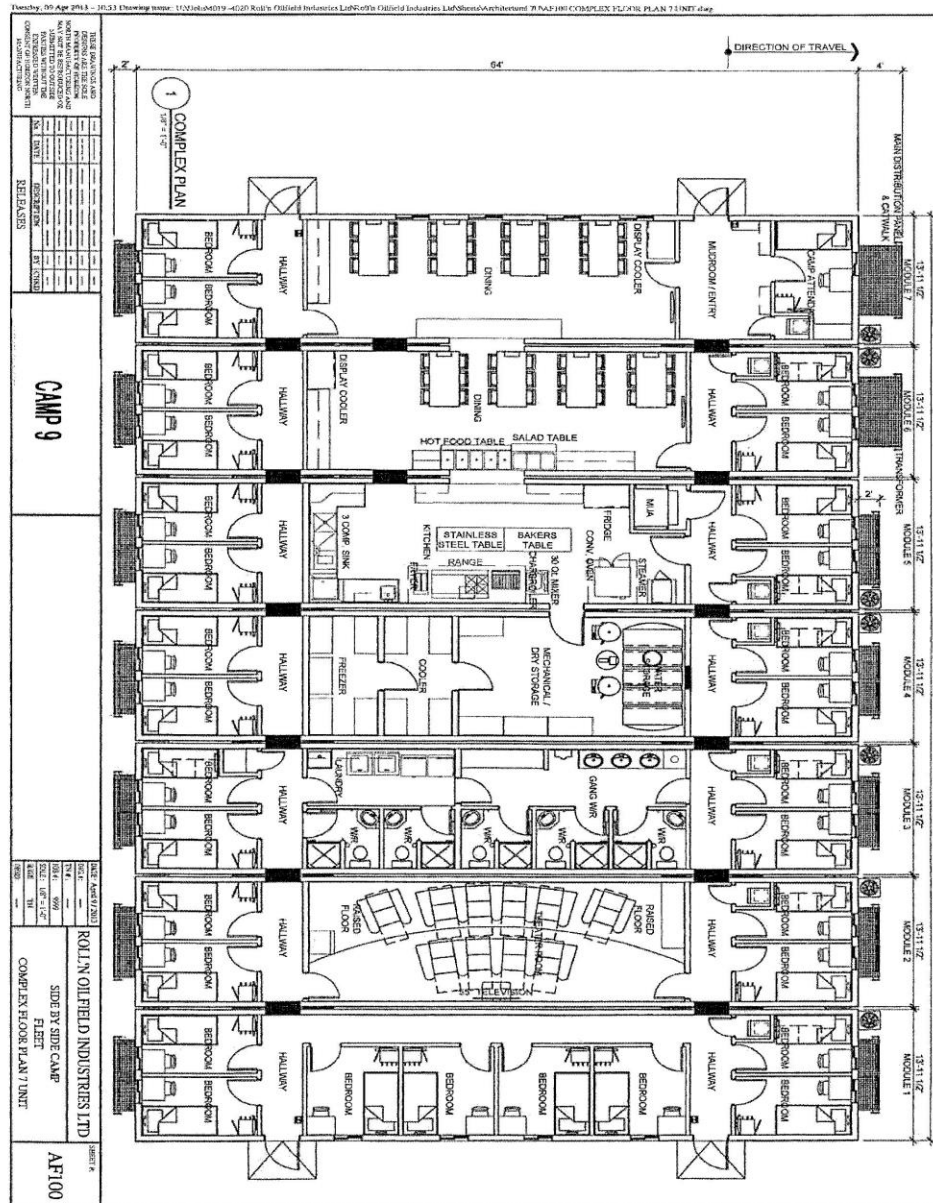


# EMERGENCY EXIT PLAN



**Roll'n Oilfield Industries Unit 8**





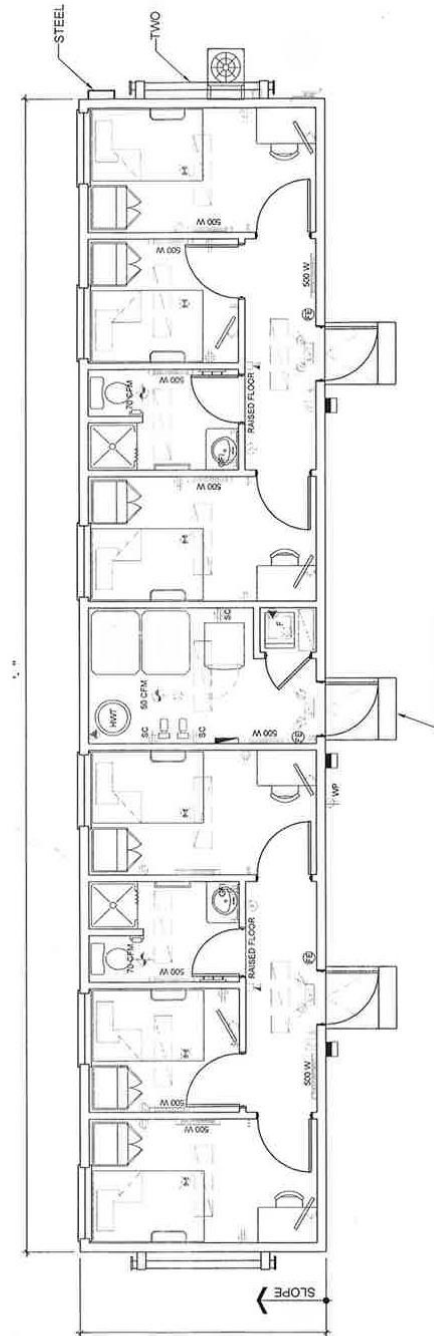
## Roll'n Oilfield Industries Unit 9







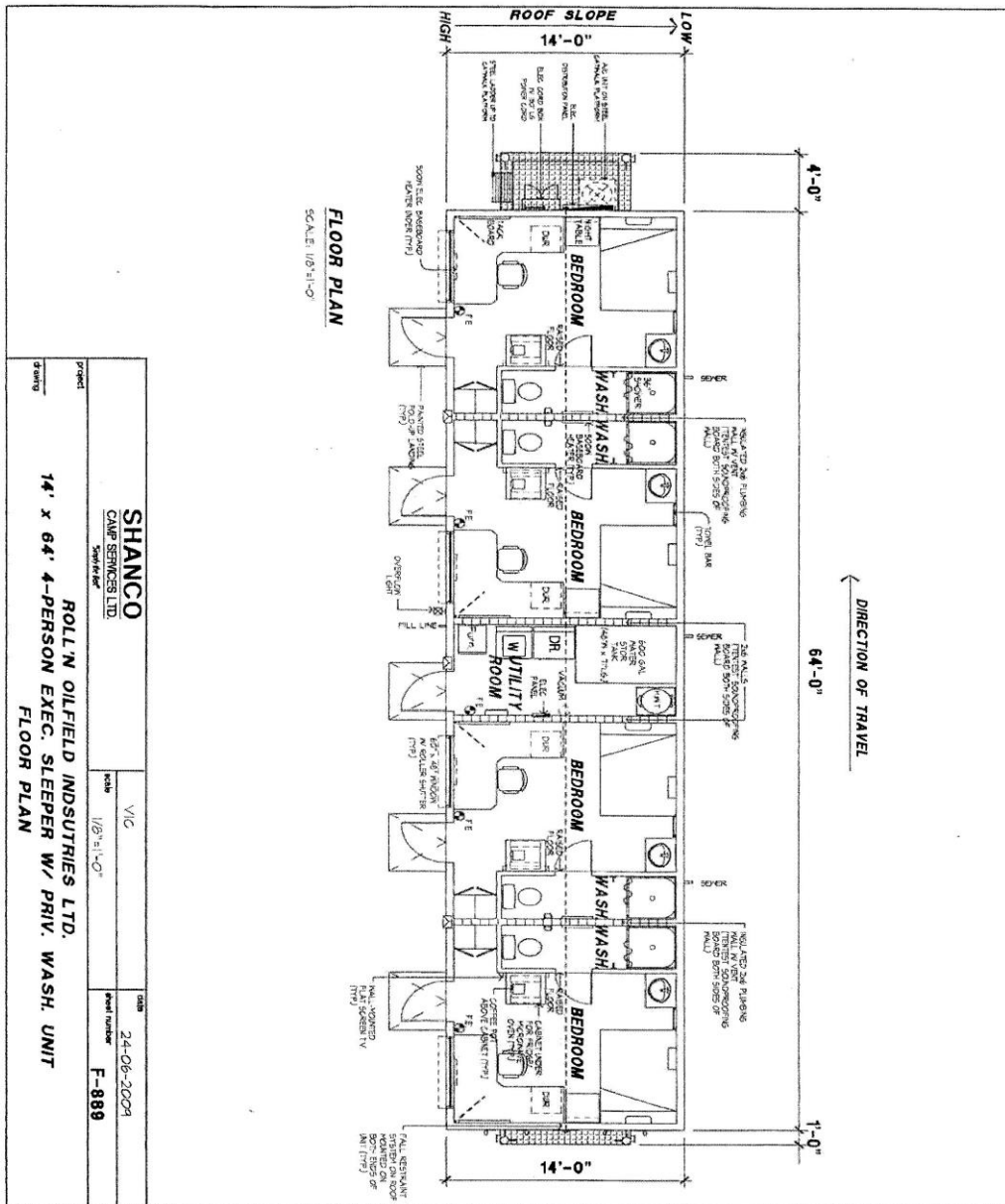




## Roll'n Oilfield Industries 6 Man Wet Sleeper



2778	DATE	09-03-2006	Sheet Number	F-593
129 AC	19	VIC	1/8" x 1'-0"	
<b>SHANCO</b> CAMP SERVICES LTD. <small>Specialty for hire</small>				
ROLL'N OILFIELD INDUSTRIES LTD. 12' x 60' SLEEPER WASH. UNIT				
Issued	Date			

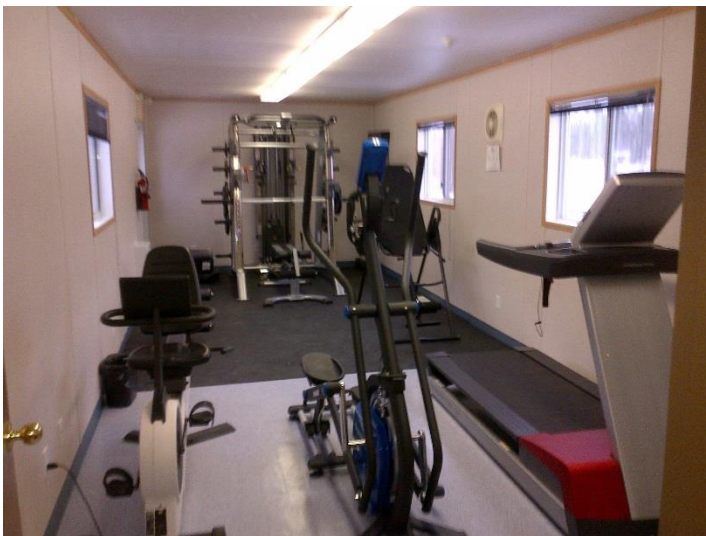
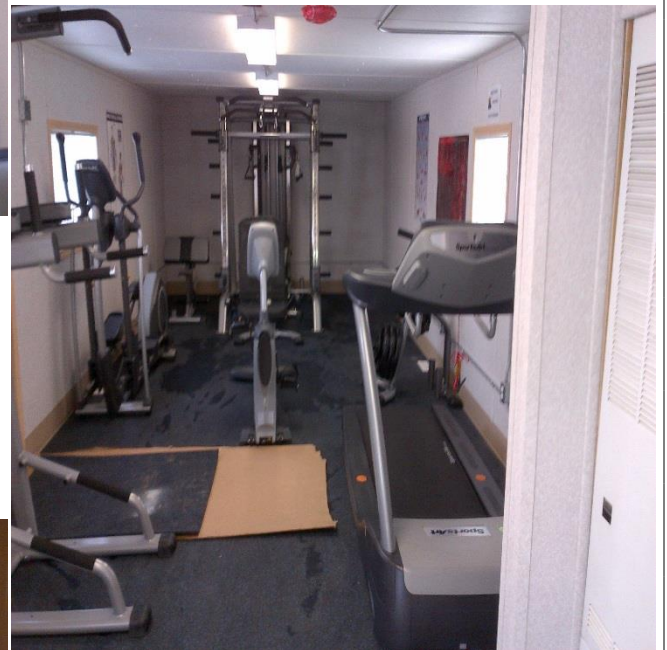


## Roll'n Oilfield Industries 4 Man VIP Quarters





## Roll'n Oilfield Industries Recreation Trailer





## Roll'n Oilfield Industries Generators





**Roll'n Oilfield Industries  
Kitchen**





**Roll'n Oilfield Industries**