

COSSD PRODUCT CATALOGUE

for



This product catalogue has been downloaded from **COSSD.com**. Listed products/services and their descriptions are shown as supplied by the title company—**COSSD** does not guarantee the accuracy or completeness of the information presented. Hosting of the PDF does not constitute an endorsement by **COSSD** of the products/services being offered.

6
WAYS TO USE
COSSD.com



SMARTPHONE / WEBSITE / DIGITAL EDITION / BOOK / iPad / GPS

Product Line



Sewage & Dewatering Pumps



B Series Sewage, Wastewater
& Effluent Transfer

C Series Cutter Pumps

Vancs Series Sewage, Wastewater
& Effluent Transfer

KTZ Series Dewatering Pumps
Flow to 600 gpm
Head to 160 ft

LH Series Dewatering Pumps
Flow to 1600 gpm
Head to 600 ft



Residential—Sump, Effluent & Sewage

Engineered Pumps

- Premium Efficiency
- Submersible Chopper Pumps
- Submersible Solids Handling Pumps - Enclosed
- Submersible Solids Handling Pumps - Enclosed (Mono Vane)
- Submersible Solids Handling Pumps - Vortex
- Submersible Solids Handling Pumps - Dry Pits
- Submersible Solids Handling Pumps - Semi Open
- Submersible Sewage Ejector Pumps
- Grinder Pumps
- Rail System



Calgary Office
11346 – 42 Street S.E.
Calgary, AB T2C 5C4
Phone:(403) 287-0256
Fax:(403) 243-7218

E-mail: westernpump@westernpump.ca

Edmonton Office
#101 – 17860 – 106a Avenue
Edmonton, AB T5S 1V3
Phone:(780) 487-5100
Fax:780) 487-8055

Product Line



Submersible Water Pumps

Water Well



5 gpm	1/2 to 2 hp
7gpm	1/2 to 2 hp
10gpm	1/2 to 3 hp
15 gpm	1/2 to 3 hp
20 gpm	3/4 to 5 hp
35 gpm	3/4 to 7 1/2 hp
45 gpm	2 to 7 1/2 hp
55 gpm	2 to 7 1/2 hp
60 gpm	2 to 7 1/2 hp
80 gpm	2 to 7 1/2 hp



Vertical Turbine & Submersible Turbine



Robbco Pumps



Submersible Turbine Pumps
Bowl Sizes 4" to 12"
Capacities 50 to 2,400 gpm

Line Shaft Turbine Pumps
Bowl Sizes 6" to 16"
Capacities 40 to 4,500 gpm

Dewatering Water Distribution
Irrigation



Calgary Office
11346 – 42 Street S.E.
Calgary, AB T2C 5C4
Phone:(403) 287-0256
Fax:(403) 243-7218

E-mail: westernpump@westernpump.ca

Edmonton Office
#101 – 17860 – 106a Avenue
Edmonton, AB T5S 1V3
Phone:(780) 487-5100
Fax:780) 487-8055

Product Line



Centrifugal Pumps



Franklin Pump Systems

HC Series Close Coupled
Bearing Frame
SAE Engine Drive
1.5 – 10" Discharge
Capacities to 7,000 gpm
Total Heads to 480 ft
Irrigation & Industrial Use



Little GIANT®

Little Giant

Sump
Sewage
Small Submersible
Effluent
Utilities/ Accessories
Magnetic Drive



Bell & Gossett

a xylem brand

Bell & Gossett

Close Coupled In Line Mounted Series
Base Mounted End Suction
Foot Mounted Close Coupled
Double Suction Split Case



GLOBAL PUMP®

Global Pump

Sewer by-pass, Municipal by-pass
Industrial Pumping
Maritime pumping
Refinery Pumping
Pulp and Paper
Quarry Dewatering



Water Treatment Equipment



Commercial & Residential

Water Softeners
Iron Filters
Carbon Filters
Sediment Filters

Reverse Osmosis Systems

U V Sterilizers

Point of use Filtration



Harmsco Filtration Products

Filtration Cartridges



Calgary Office
11346 – 42 Street S.E.
Calgary, AB T2C 5C4
Phone:(403) 287-0256
Fax:(403) 243-7218

E-mail: westernpump@westernpump.ca

Edmonton Office
#101 – 17860 – 106a Avenue
Edmonton, AB T5S 1V3
Phone:(780) 487-5100
Fax:780) 487-8055

Product Line



Motors & Controls



Franklin Electric



Franklin Electric offers a complete line of submersible motors for groundwater and other submerged pumping applications. Our 4-inch submersibles (1/3 through 10 hp) feature the industry's widest range of voltage and frequency ratings in both single- and three-phase models. For deeper wells and applications requiring higher flow ratings, Franklin's 6-inch and 8-inch submersibles are available from 5 through 200 hp.



Danfoss

VLT AQUA Drive FC200

The VLT AQUA Drive the perfect match for pumps in water and wastewater systems. With a wide range of powerful standard and optional features designed specifically for water and wastewater applications, the VLT® AQUA Drive provides the lowest overall cost of ownership of any drive available. Single to Three Phase Conversion Complete Range of Drives

From 033 to 630 HP
NEMA/UL Type 1, 12, and 3R enclosures
IP20-66



Calgary Office
11346 – 42 Street S.E.
Calgary, AB T2C 5C4
Phone:(403) 287-0256
Fax:(403) 243-7218

Edmonton Office
#101 – 17860 – 106a Avenue
Edmonton, AB T5S 1V3
Phone:(780) 487-5100
Fax:780) 487-8055

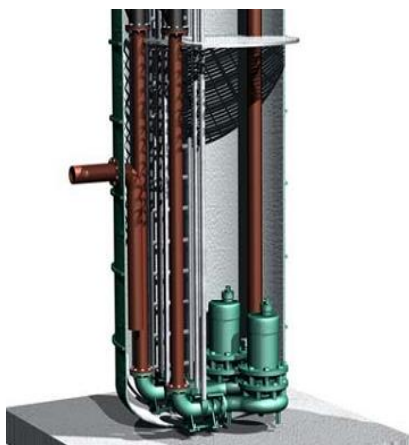
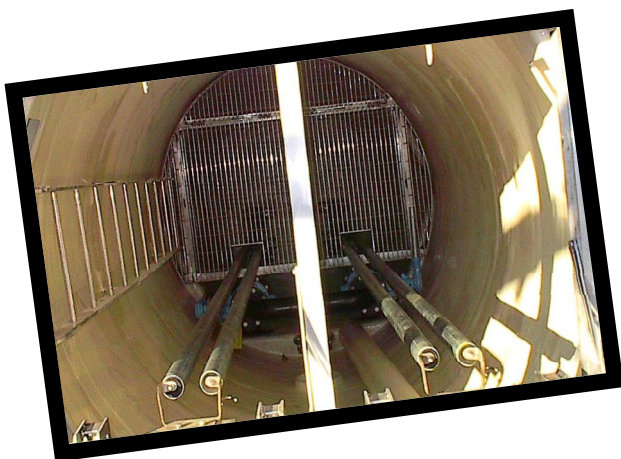
E-mail: westernpump@westernpump.ca



Custom Lift Stations

Western Pump has been designing and supplying custom built lift stations since 1970. Whether it be for a small community or a large industrial project we have the expertise to meet all of your needs.

Applications:
Sewage Lift Stations
Storm Water Lift Stations
Process & Dewatering Lift Stations



Calgary Office
 11346 – 42 Street S.E.
 Calgary, AB T2C 5C4
 Phone: (403) 287-0256
 Fax: (403) 243-7218

Edmonton Office
 #101 – 17860 – 106a Avenue
 Edmonton, AB T5S 1V3
 Phone: (780) 487-5100
 Fax: (780) 487-8055

E-mail: westernpump@westernpump.ca

Water Treatment Plants



Distribution Skids



Calgary Office
11346 – 42 Street S.E.
Calgary, AB T2C 5C4
Phone:(403) 287-0256
Fax:(403) 243-7218

Edmonton Office
#101 – 17860 – 106a Avenue
Edmonton, AB T5S 1V3
Phone:(780) 487-5100
Fax:780) 487-8055

E-mail: westernpump@westernpump.ca